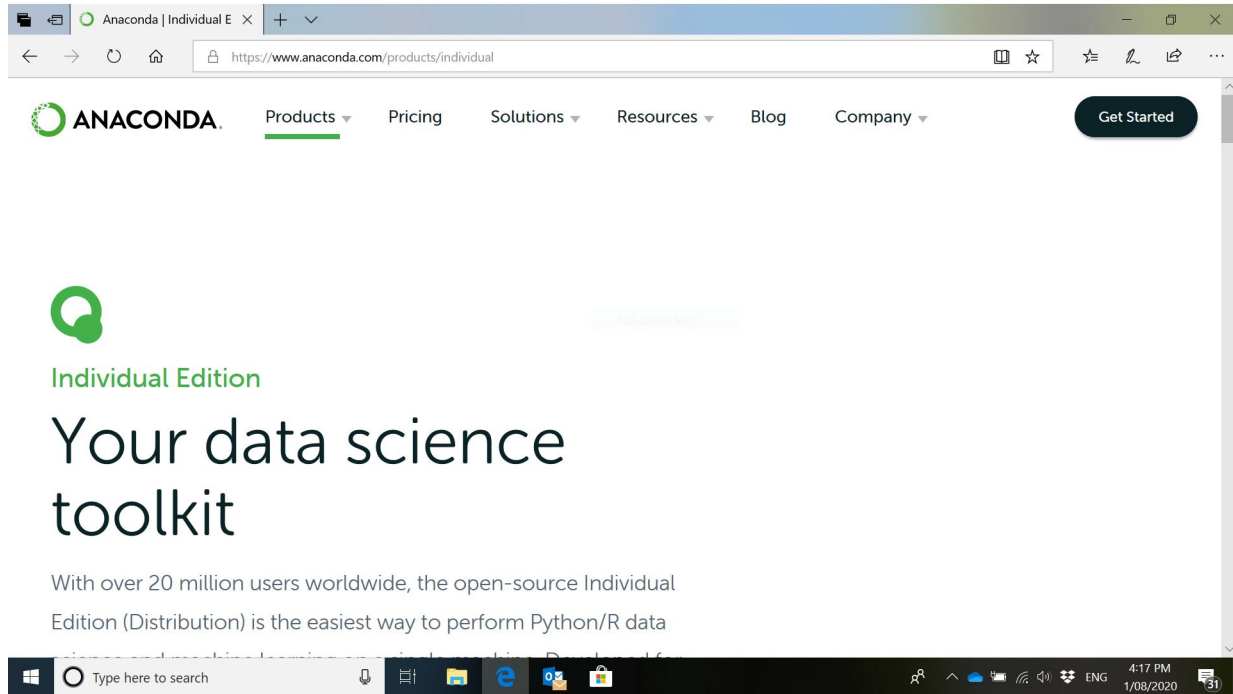


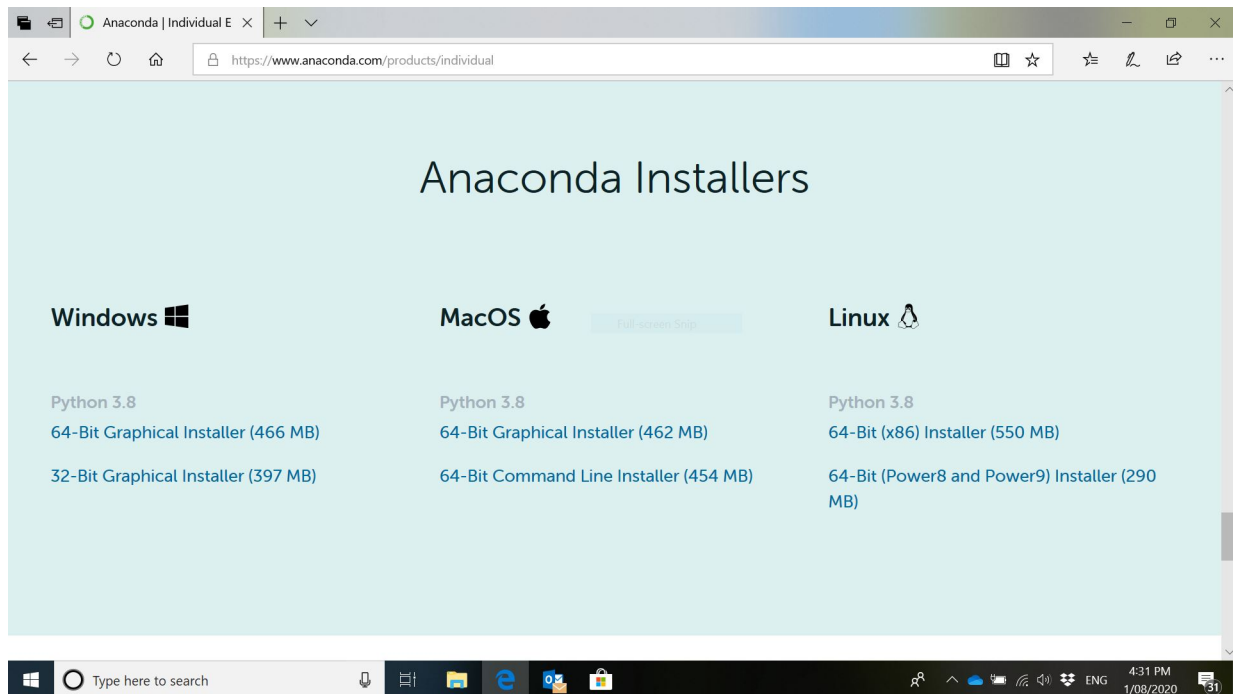
Week 1: Installation.

Comments: The instructions are for Windows. Use Firefox is Internet Explorer is not working well.

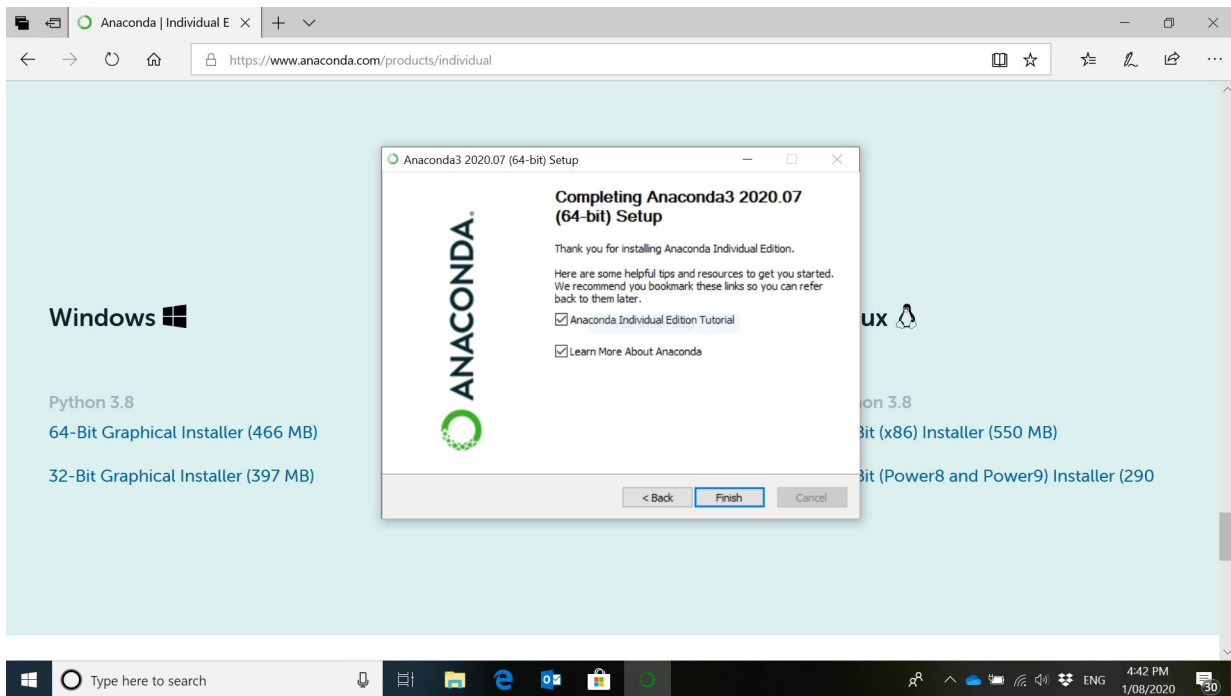
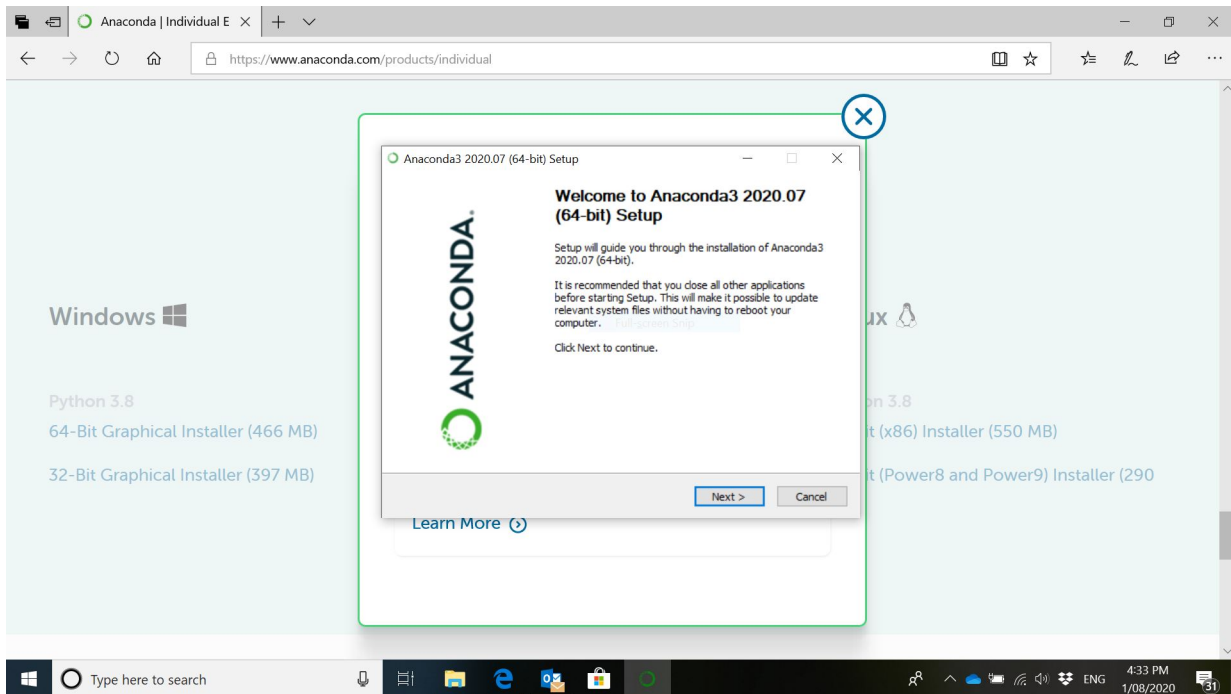
Go to [www.anaconda.com/products/individual](https://www.anaconda.com/products/individual)



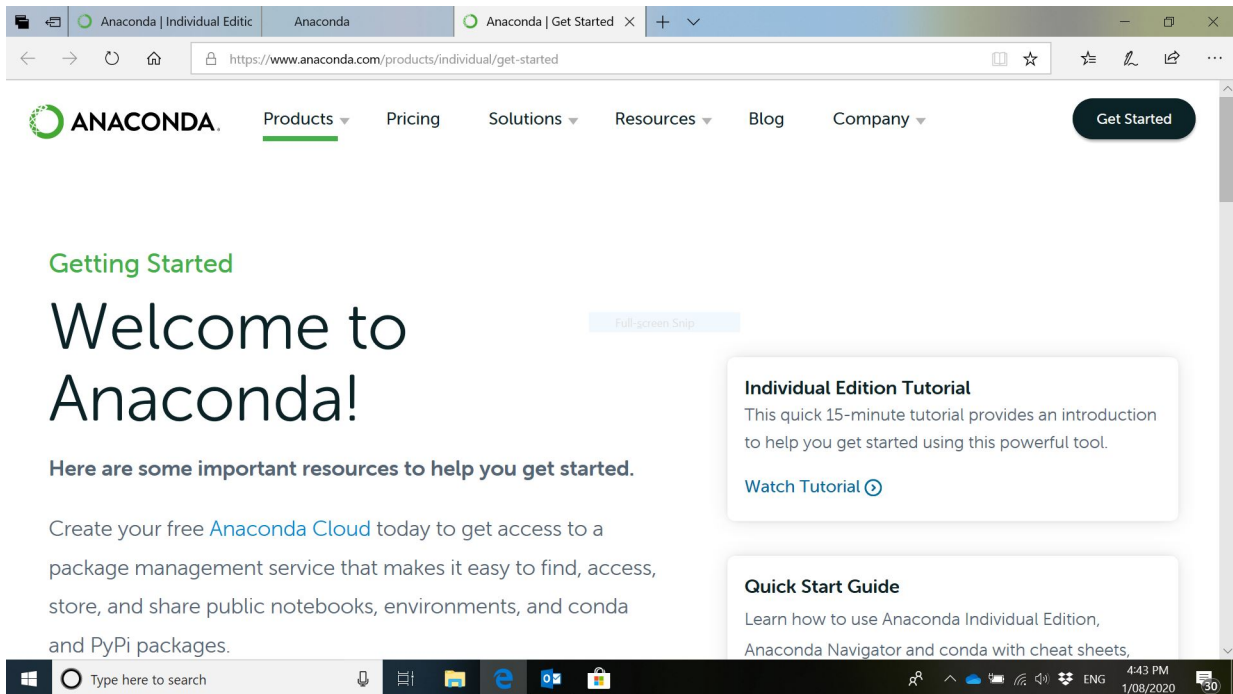
Scroll down (same page) and choose your installer.



## Follow the instructions

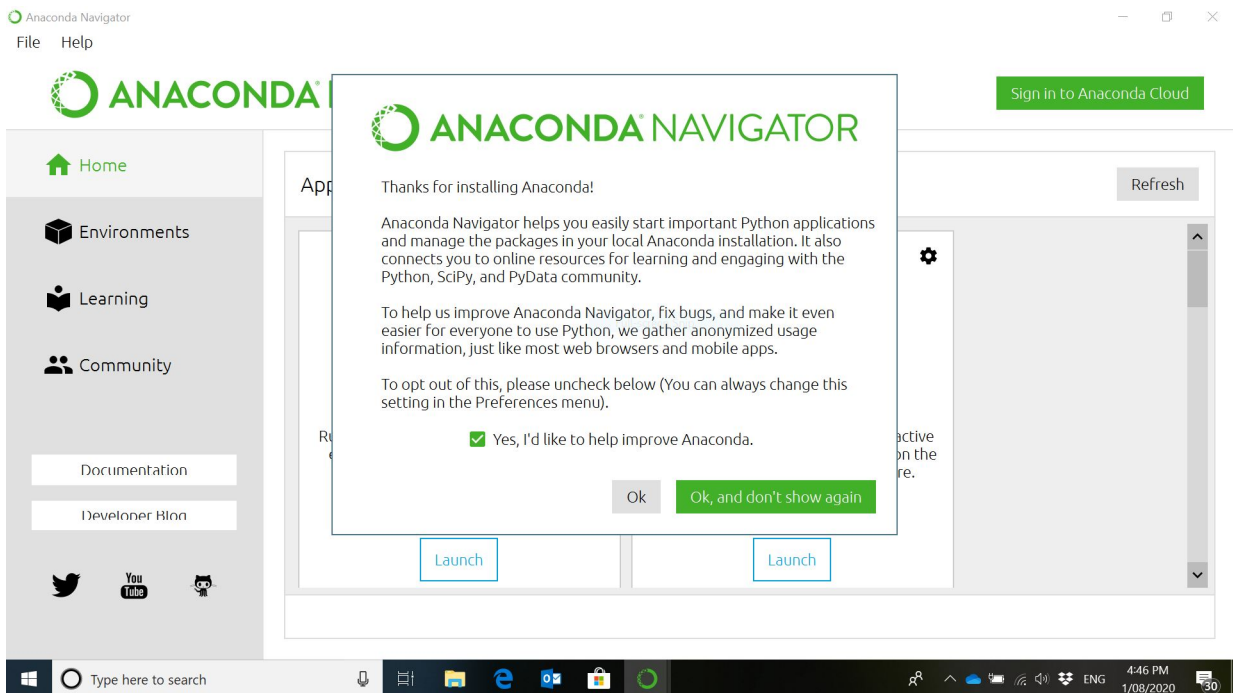


You may be asked if you want an account with Anaconda. You don't have to apply for one.

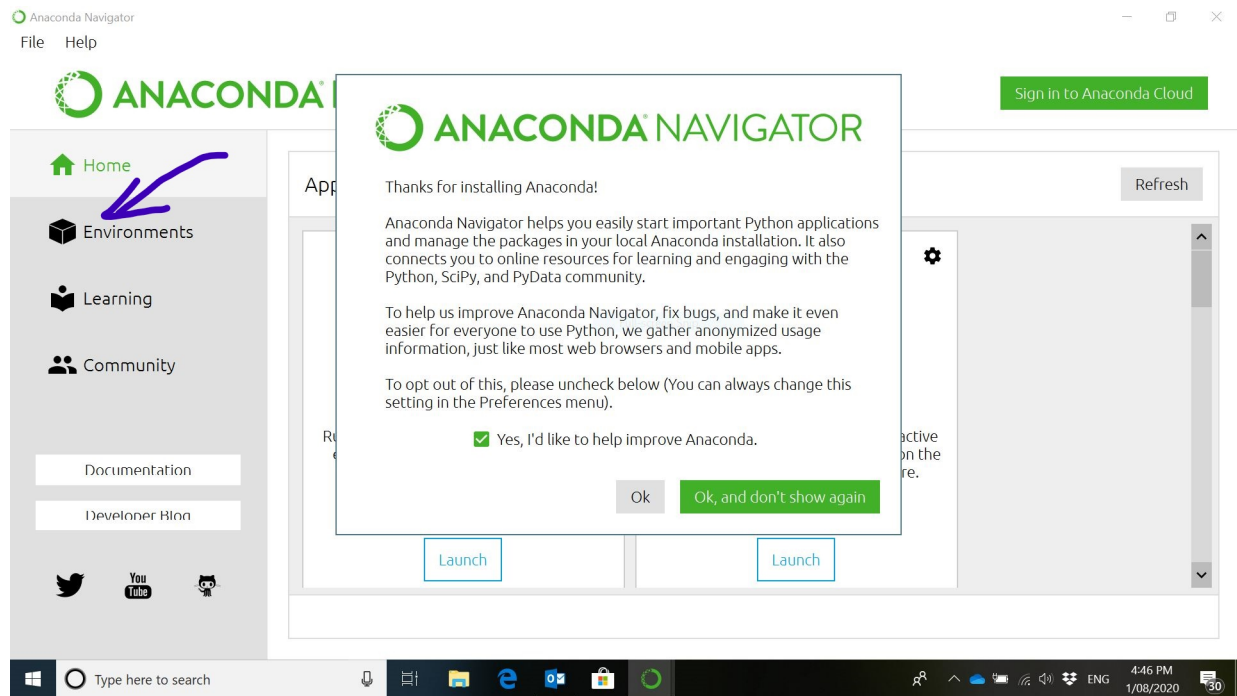


You can now explore some options, tutorials, etc.

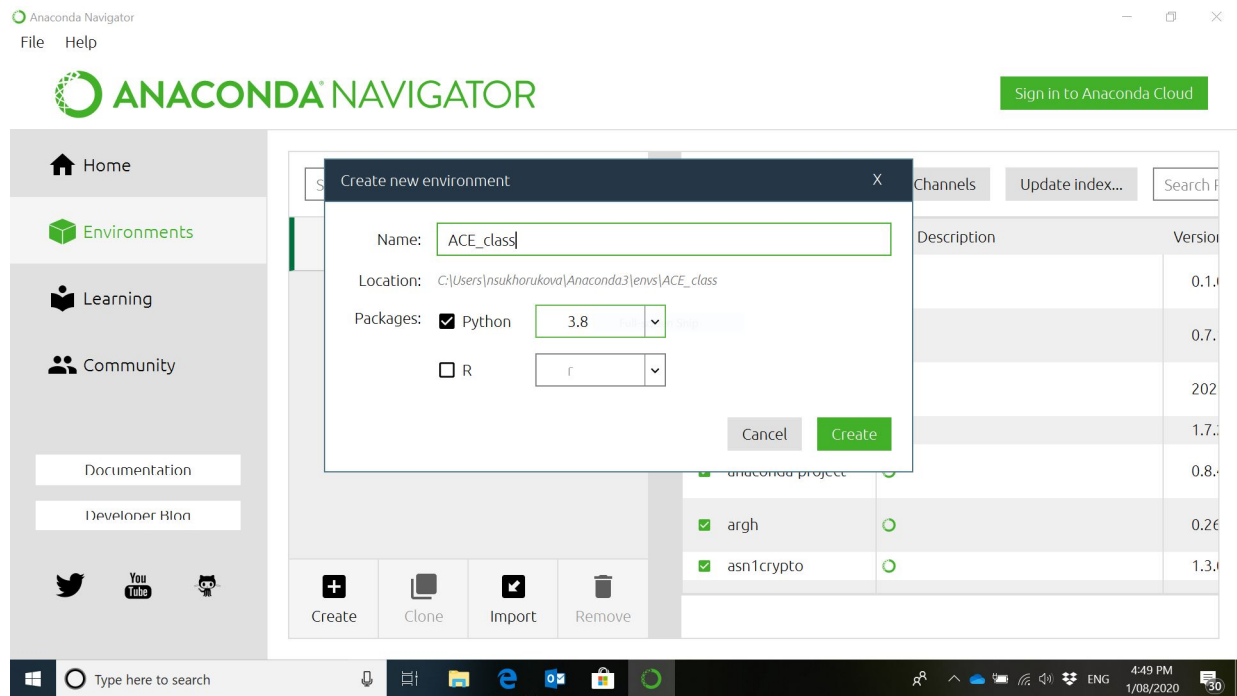
You can now open Anaconda Navigator (check the list of applications “Type here to search” option, for example).



Choose what you prefer. After you make your choice, go to “Environments”



Create “New Environment”. For example, “AceClass”.



Now you need to install packages: Anaconda, JupyterLab, PyTorch, CVXOpt.

The screenshot shows the Anaconda Navigator application window. The top-left corner displays the application name and menu options. The main interface features a sidebar with navigation options and a central panel showing a list of packages. The search bar contains the text "Not installed". The package list includes:

Name	T	Description	Version
<input checked="" type="checkbox"/> anaconda	○		2020.0
<input type="checkbox"/> conda	○	<a href="#">Full-screen Snip</a>	4.8.3
<input type="checkbox"/> glueviz	○	Multi-dimensional linked data exploration	0.15.2
<input checked="" type="checkbox"/> jupyterlab	○	Jupyterlab pre-alpha	2.1.5
<input type="checkbox"/> m2w64-gcc-libgfortran	○		5.3.0
<input type="checkbox"/> m2w64-gcc-libs	○		5.3.0
<input type="checkbox"/> m2w64-gcc-libs-core	○		5.3.0

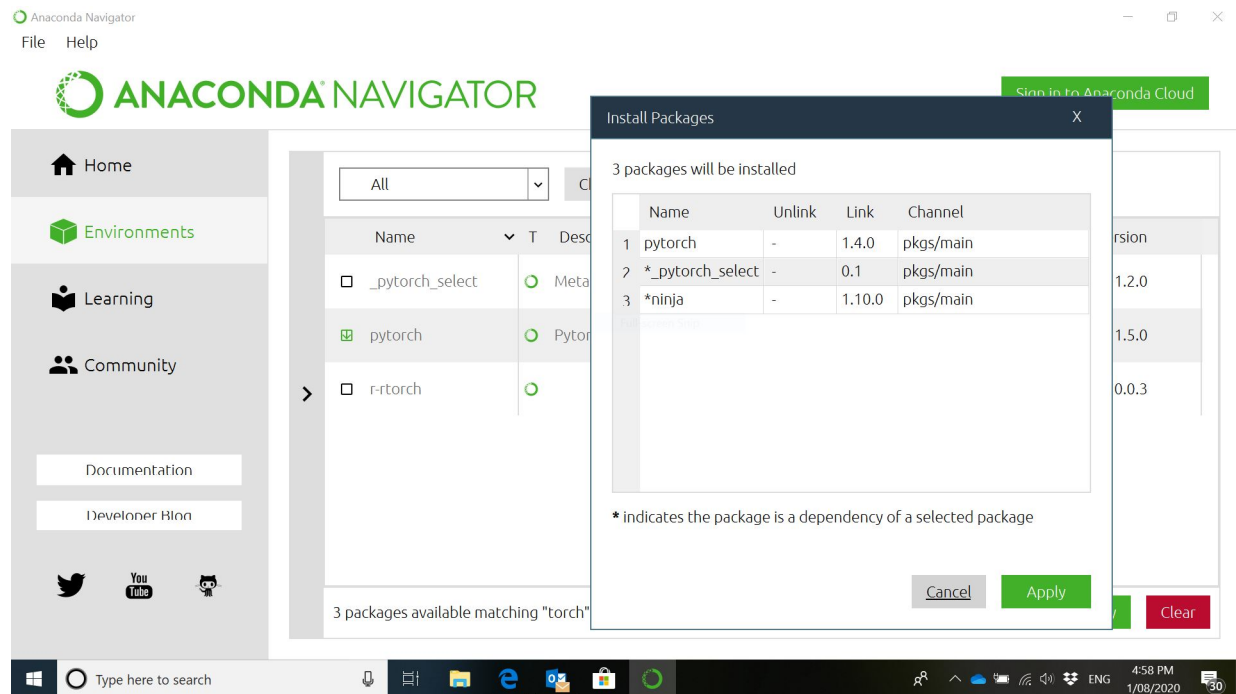
At the bottom of the package list, it indicates "15 packages available" and "2 packages selected". An "Apply" button is visible in the bottom right corner of the package list area.

The screenshot shows the Anaconda Navigator application window with the search bar containing the text "torch". The package list displays the following results:

Name	T	Description
<input type="checkbox"/> _pytorch_select	○	Metapackage for establishing variant priority in pytorch variants. <a href="#">View on PyPI</a>
<input type="checkbox"/> pytorch	○	Pytorch is an optimized tensor library for deep learning using gpus and cpus.
<input type="checkbox"/> r-rtorch	○	

At the bottom of the package list, it indicates "3 packages available matching 'torch'".

You may get a message like this (“Apply”):



Now you are ready to explore “Documentation”, “Developer Blog” and other options.

Week 2 will be dedicated to Linear Programming:

<https://cvxopt.org/userguide/coneprog.html#linear-programming>